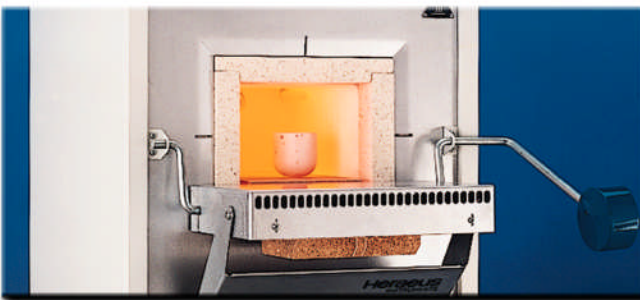




### APPLICATIONS

- Industrial ovens
- Boilers
- Painting chambers
- Drying Ovens
- Brick and tile manufacturing
- Maschine and manufacturing plants



### ... QUALITY IS OUR TRADITION

Textile glass fibre products can be found in virtually all aspects of every day life. Manufactured using state-of-the-art systems, our products are environmentally-friendly and completely safe. Vincent and Diederik Cuyllits are proud of their family business, which they run in the third generation now.



Textilglas-Technologie  
GmbH & Co. KG  
Max-Planck-Strasse 15-19  
DE-49593 Bersenbrück  
Germany

Phone: +49 (0) 5439 / 94 16-0  
Fax: +49 (0) 5439 / 94 16-10  
info@culimeta.de

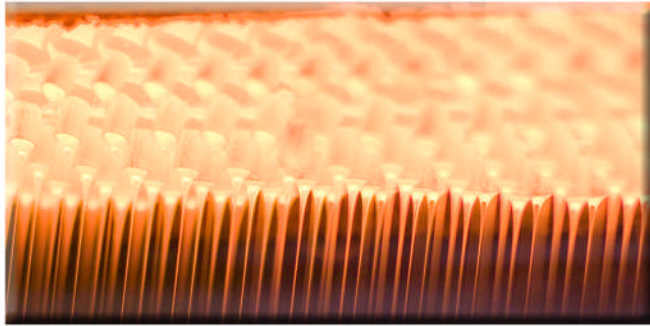
# E-glass Packings



FOR SEALING  
AND INSULATION



[www.culimeta.de](http://www.culimeta.de)



### THE BASIS: GLASS

At the leading edge of technology today as it was in ancient times, glass is the heart of technical textiles at Culimeta. Their low density, minimal dilation and high tensile strength make continuous filament glass fibre products ideal for a vast variety of applications.

### THE PROCESSING: TEXTURISING

Using the air jet method, single, parallel and core effect texturised yarns and threads can be manufactured. With the so called „overspray system“ this effect can be fixed. The texturising process produces a bulked yarn containing more air pockets, providing better insulation than smooth yarns.



### FACTS

#### Description:

2-dimensional or sleeve braided

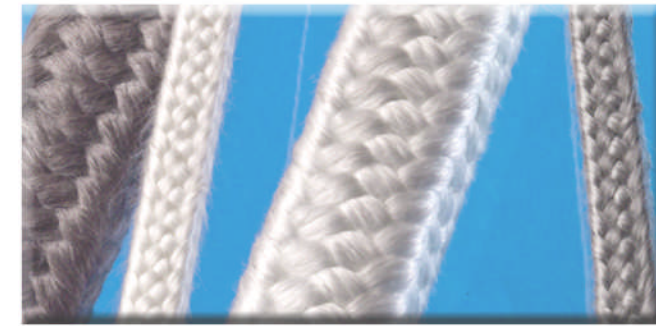
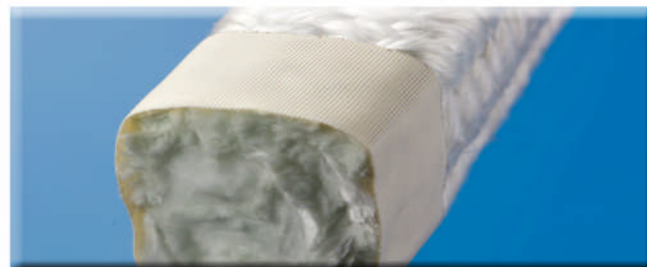
#### Forms:

round, square, rectangular

#### Qualities:

three different qualities for variable temperature resistances

All types of packings and seals can be manufactured, based on the raw material used, to withstand different temperature ranges. Therefore no compromises are necessary regarding to the adaptability of seal materials and the very strict health regulations.



Article	Cross-section	available dimensions in mm min - max S = Thickness B = Width	Temperature resistance up to
E-glass packing		S = 20 - 40 B = 20 - 40	
E-glass round seal		S = 3 - 20	
E-glass round seal overbraided		S = 3 - 25	
E-glass round seal with steel hollow cord		S = 5 - 14	
E-glass flat seal		S = 1 - 6 B = 8 - 100	
E-glass structural seal with one E-glass cord and lock stitch seam		S = 6 - 16 B = 15 - 70	
E-glass structural seal with one steel hollow cord and lock stitch seam		S = 6 - 16 B = 15 - 70	
E-glass structural seal with two E-glass cords and lock stitch seam		S = 6 - 16 B = 15 - 70	
E-glass flat seal with single or double lock stitch seam		S = 1 - 6 B = 15 - 100	
E-glass structural seal with one E-glass cord and double lock stitch seam		S = 6 - 16 B = 15 - 65	
E-glass structural seal with two E-glass cords or steel hollow cord with double lock stitch seam		S = 6 - 16 B = 15 - 65	

